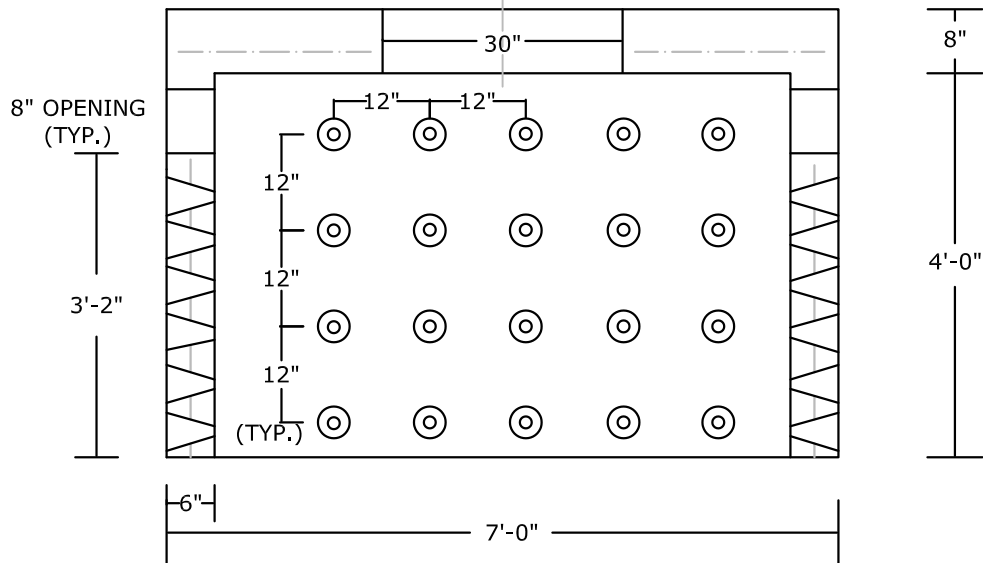


PLAN VIEW



SECTION VIEW

**NOTES:**

- HS-20 LOAD RATED
- CONCRETE 5,000 PSI @ 28 DAYS
- REINFORCING: DETAILS FURNISHED UP REQUEST
- ONE PIECE UNIT
- CAPACITY: 845 GALLONS/ 112 CUBIC FEET
- WEIGHT: 10,000 LBS.+/-
- ADDITIONAL OPENING UPON REQUEST:
  - 24" x 48" (A) OPENING
  - 42" x 48" (B,E) OPENING
  - 48" ROUND OPENING

<b>PEERLESS CONCRETE PRODUCTS CO.</b>		246 Main Street Butler, NJ 07405 973.838.3060p	
<i>SINCE 1959</i>		www.peerlessconcrete.com	
sales@peerlessconcrete.com		www.peerlessconcrete.com	
<b>4'-8" HI x 7'-0" DIA. HEAVY DUTY SEEPAGE PIT</b>			
CUSTOMER:			
PROJECT:			
SCALE: N.T.S.	DATE: 12/2023	EST#:	<b>B-11</b>