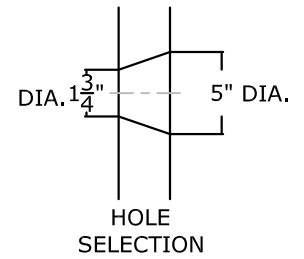
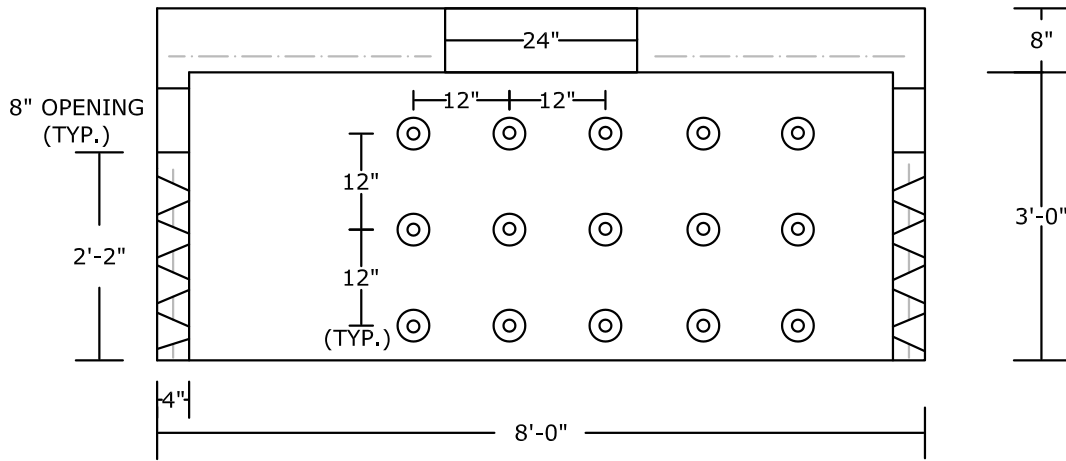


(8) #4 BARS  
AROUND OPENING

24"



PLAN VIEW



SECTION VIEW

**NOTES:**

- HS-20 LOAD RATED
- CONCRETE 5,000 PSI @ 28 DAYS
- REINFORCING: DETAILS FURNISHED UP REQUEST
- ONE PIECE UNIT
- CAPACITY: 970 GALLONS/ 130 CUBIC FEET
- WEIGHT: 9,000 LBS.+/-

<b>PEERLESS CONCRETE PRODUCTS CO.</b>		246 Main Street Butler, NJ 07405 973.838.3060p	
SINCE 1959		www.peerlessconcrete.com	
sales@peerlessconcrete.com		www.peerlessconcrete.com	
<b>3'-8" HI x 8'-0" DIA. HEAVY DUTY SEEPAGE PIT</b>			
CUSTOMER:			
PROJECT:			
SCALE: N.T.S.	DATE: 12/2023	EST#:	<b>B-14</b>