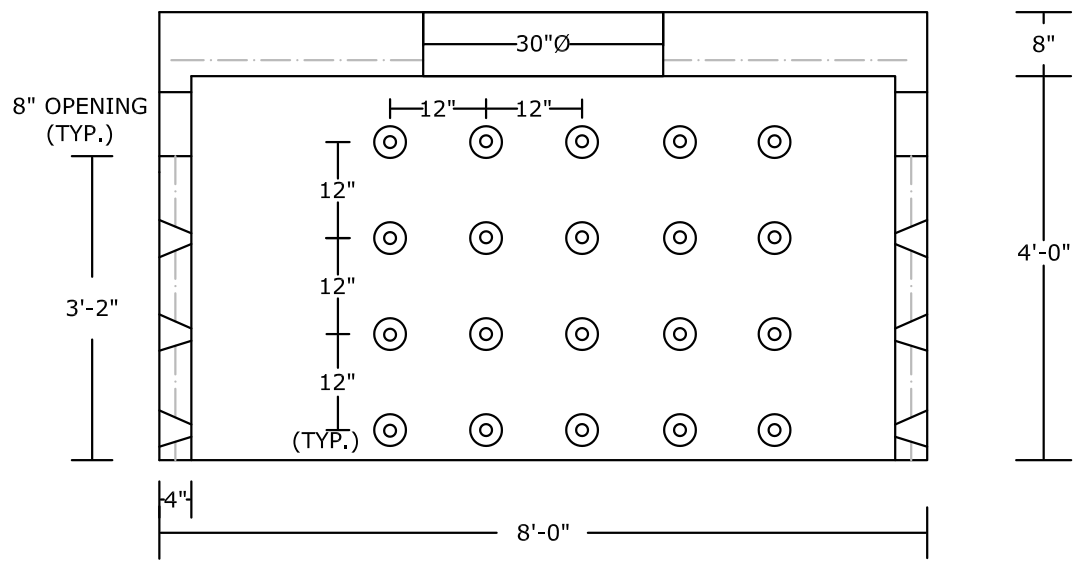
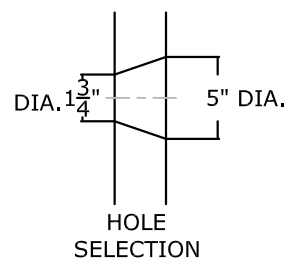


PLAN VIEW



SECTION VIEW

NOTES:

- HS-20 LOAD RATED
- CONCRETE 5,000 PSI @ 28 DAYS
- REINFORCING: DETAILS FURNISHED UP REQUEST
- ONE PIECE UNIT
- CAPACITY: 1290 GALLONS/ 172 CUBIC FEET
- WEIGHT: 10,000 LBS.+/-

PEERLESS CONCRETE PRODUCTS CO. SINCE 1959		246 Main Street Butler, NJ 07405 973.838.3060p	
		sales@peerlessconcrete.com	
4'-8" HI x 8'-0" DIA. HEAVY DUTY SEEPAGE PIT			
CUSTOMER:			
PROJECT:			
SCALE: N.T.S.		DATE: 12/2023	EST#:
			B-17