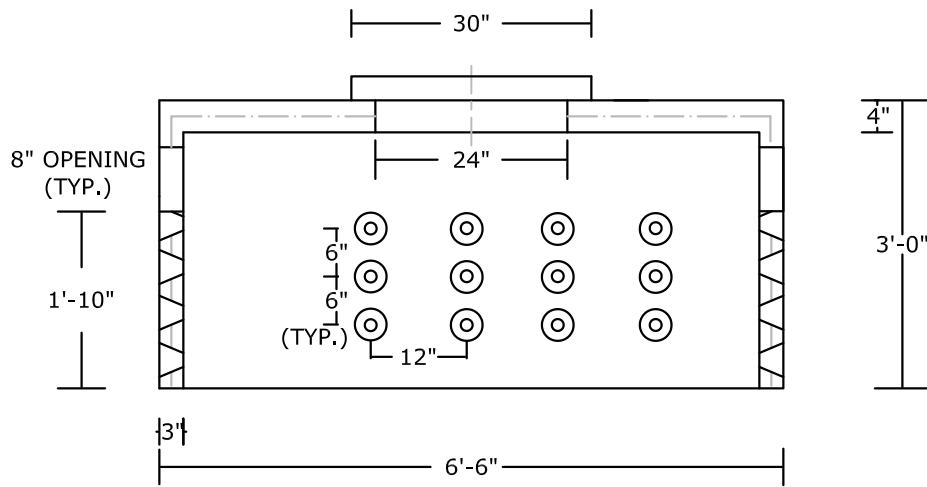
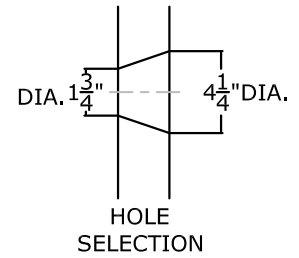


PLAN VIEW



SECTION VIEW

NOTES:

- NON-TRAFFIC RATED
- CONCRETE 5,000 PSI @ 28 DAYS
- REINFORCING: DETAILS FURNISHED UPON REQUEST
- 6'-0" MAX. BACKFILL ON TOP OF TANK
- CAPACITY: 500 GALLONS/ 67 CUBIC FEET
- WEIGHT: 4000 LBS.+/-

PEERLESS CONCRETE PRODUCTS CO.		246 Main Street Butler, NJ 07405 973.838.3060p	
<i>SINCE 1959</i>		www.peerlessconcrete.com	
sales@peerlessconcrete.com		www.peerlessconcrete.com	
3' SEEPAGE PIT			
CUSTOMER:			
PROJECT:			
SCALE: N.T.S.	DATE: 12/2023	EST#:	B-2