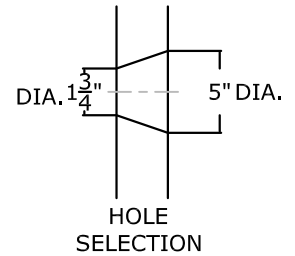
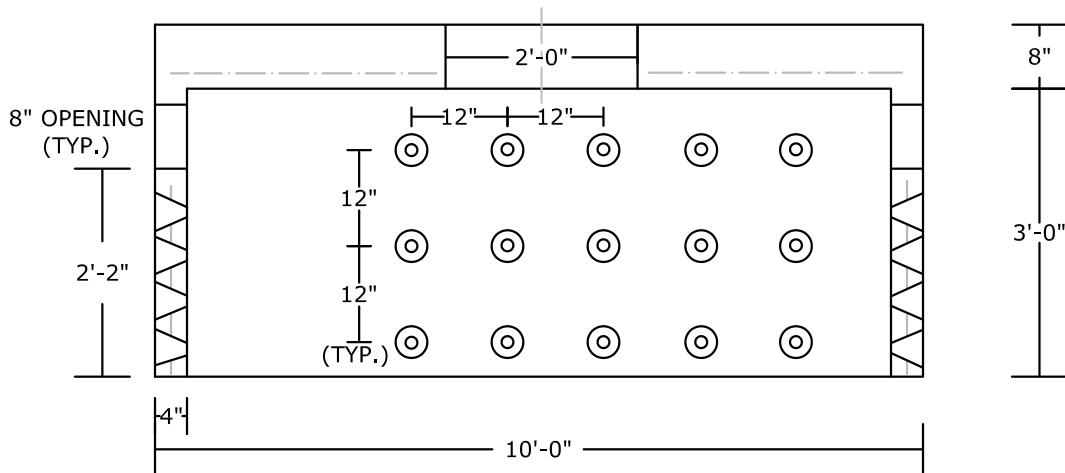


(8) #4 BARS
AROUND OPENING

24"



PLAN VIEW



SECTION VIEW

NOTES:

- HS-20 LOAD RATED
- CONCRETE 5,000 PSI @ 28 DAYS
- REINFORCING: DETAILS FURNISHED UP REQUEST
- ONE PIECE UNIT
- CAPACITY: 1530 GALLONS/ 205 CUBIC FEET
- WEIGHT: 12,600 LBS.+/-

PEERLESS CONCRETE PRODUCTS CO.		246 Main Street Butler, NJ 07405 973.838.3060p	
<i>SINCE 1959</i>		www.peerlessconcrete.com	
sales@peerlessconcrete.com		www.peerlessconcrete.com	
3'-8" HI x 10'-0" DIA. HEAVY DUTY SEEPAGE PIT			
CUSTOMER:			
PROJECT:			
SCALE: N.T.S.	DATE: 12/2023	EST#:	B-21