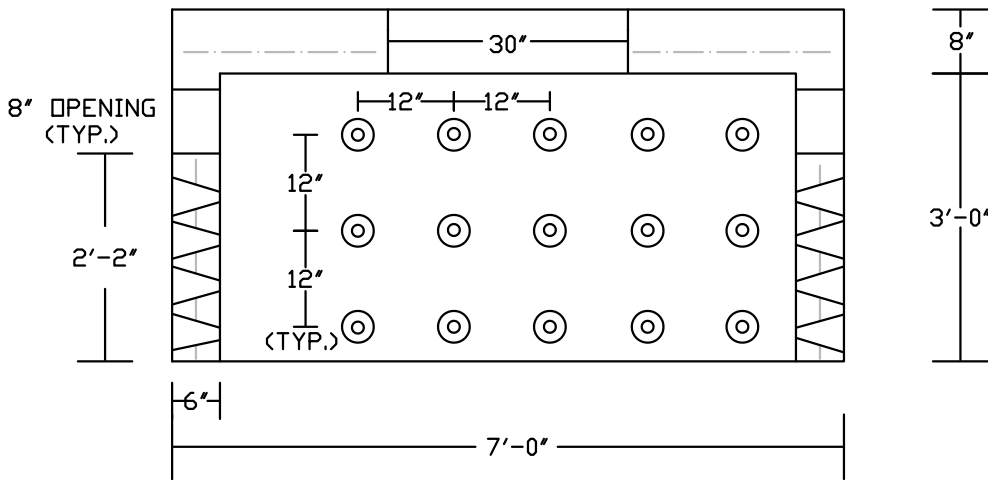
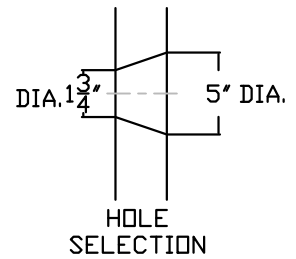


PLAN VIEW



SECTION VIEW

**NOTES:**

- HS-20 LOAD RATED
- CONCRETE 5,000 PSI @ 28 DAYS
- REINFORCING: DETAILS FURNISHED UP REQUEST
- ONE PIECE UNIT
- CAPACITY: 634 GALLONS/ 84 CUBIC FEET
- WEIGHT: 9000 LBS.+/-
- ADDITIONAL OPENINGS UPON REQUEST:
  - 24" x 48" (A) OPENING
  - 42" x 48" (B,E) OPENING
  - 48" ROUND OPENING

**PEERLESS CONCRETE PRODUCTS CO.**

SINCE 1959

sales@peerlessconcrete.com

246 Main Street  
Butler, NJ 07405  
973.838.3060p

www.peerlessconcrete.com

**3'-8" HI x 7'-0" DIA. HEAVY DUTY SEEPAGE PIT**

CUSTOMER:

PROJECT:

SCALE: N.T.S.

DATE: 12/2023

EST#:

**B-9**