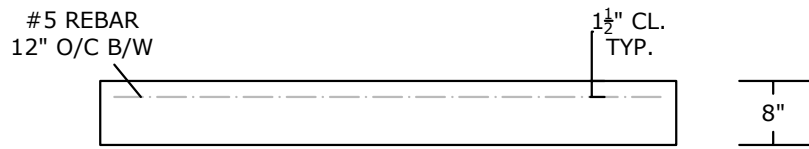


PLAN VIEW



SECTION VIEW

NOTES:

- HS-25 LOAD RATED
- CONCRETE 5,000 PSI @ 28 DAYS
- REINFORCING: AS SPECIFIED, GRADE 60 REBAR
- TOTAL WEIGHT: 3,740 LBS.
- MANUFACTURED IN ACCORDANCE WITH ASTM C-913

<b>PEERLESS CONCRETE PRODUCTS CO.</b> SINCE 1959		246 Main Street Butler, NJ 07405 973.838.3060p	
		sales@peerlessconcrete.com      www.peerlessconcrete.com	
<b>6'-0" X 6'-0" BASE SLAB</b>			
CUSTOMER:			
PROJECT:			<b>C-18</b>
SCALE: N.T.S.	DATE: 12/2023	EST#:	