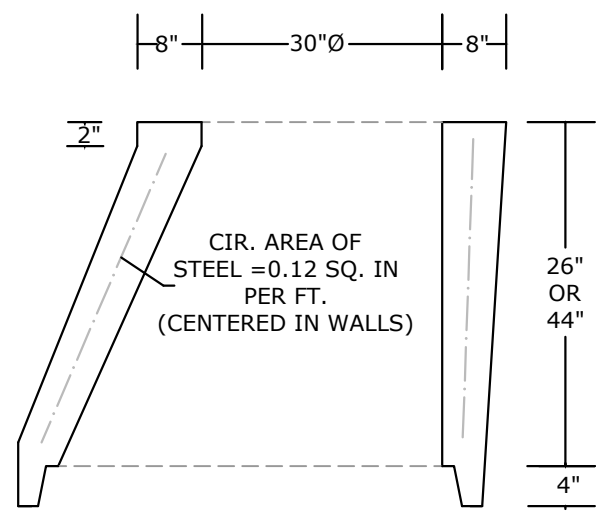
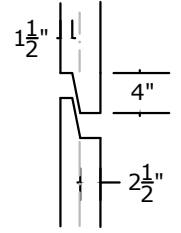


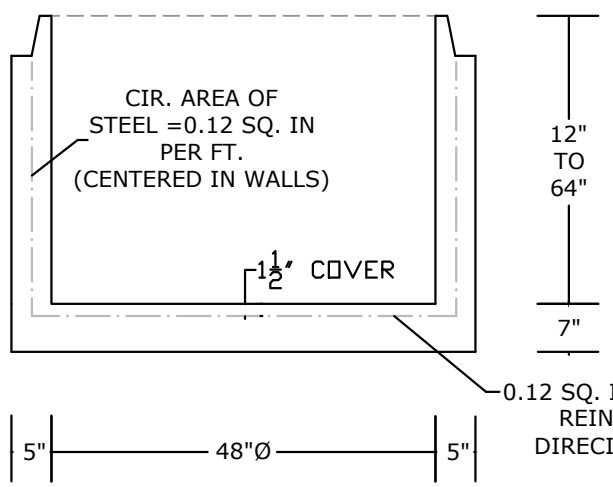
RISER SECTION



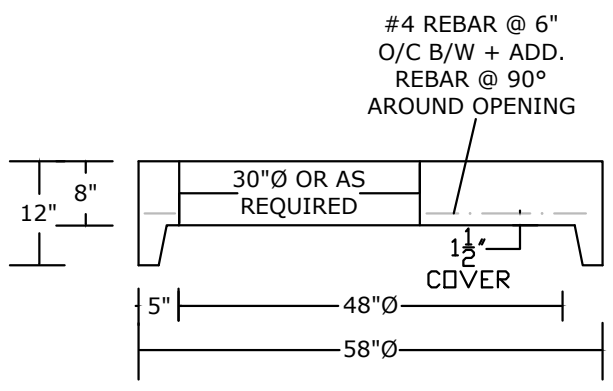
CONE SECTION



JOINT DETAIL



BASE SECTION



FLAT TOP

0.12 SQ. IN. PER LIN. FT REIN. IN BOTH DIRECTIONS (BASE)

**NOTES:**

- HS-25 LOAD RATED
- CONCRETE 5,000 PSI @ 28 DAYS
- REINFORCING: AS SPECIFIED, GRADE 60 REBAR
- BASE WEIGHT: 1,380 LBS. WEIGHT PER V.F.: 860 LBS.
- FLAT TOP WEIGHT: 1,820 LBS.
- MANUFACTURED IN ACCORDANCE WITH ASTM C-478
- STEPS: 12" O/C - STEEL REINFORCED
- POLYPROPYLENE COATED, DOT APPROVED
- 0-2 FT SOIL COVER OVER TOP OF STRUCTURE
- TOP OF BASE SLAB = 20' MAX BELOW GRADE
- STRUCTURE HEIGHT = 20' MAX

<b>PEERLESS CONCRETE PRODUCTS CO.</b> SINCE 1959		246 Main Street Butler, NJ 07405 973.838.3060p	
		<a href="mailto:sales@peerlessconcrete.com">sales@peerlessconcrete.com</a>	
<a href="http://www.peerlessconcrete.com">www.peerlessconcrete.com</a>		<b>48" DIAMETER STORM MANHOLE</b>	
CUSTOMER:			
PROJECT:			
SCALE: N.T.S.	DATE: 12/2023	EST#:	<b>D-2</b>