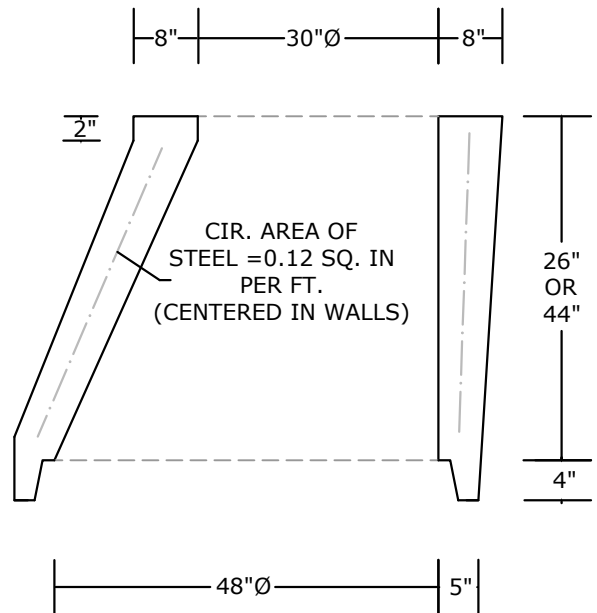
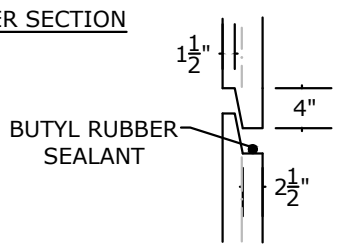


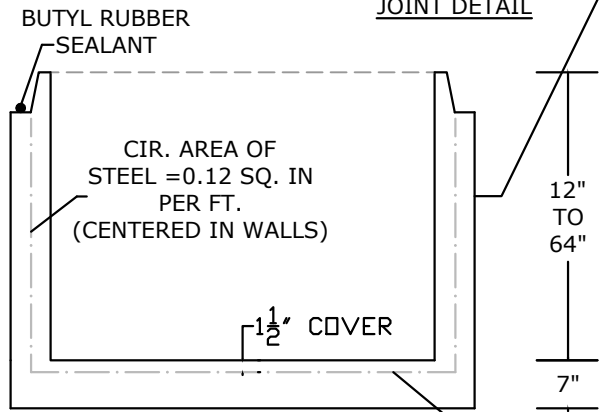
RISER SECTION



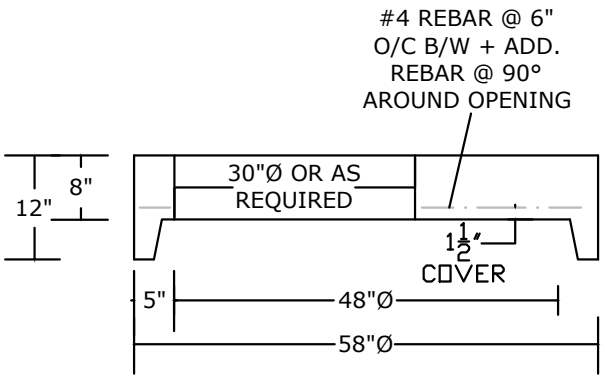
CONE SECTION



JOINT DETAIL



BASE SECTION



FLAT TOP

0.12 SQ. IN. PER LIN. FT REIN. IN BOTH DIRECTIONS (BASE)

NOTES:

- HS-25 LOAD RATED
- CONCRETE 5,000 PSI @ 28 DAYS
- REINFORCING: AS SPECIFIED, GRADE 60 REBAR
- BASE WEIGHT: 1,380 LBS. WEIGHT PER V.F.: 860 LBS.
- FLAT TOP WEIGHT: 1,820 LBS.
- MANUFACTURED IN ACCORDANCE WITH ASTM C-478
- STEPS: 12" O/C - STEEL REINFORCED POLYPROPYLENE COATED, DOT APPROVED
- 4"-12" PVC CHANNEL (MAX.), AS NEEDED
- 0-2 FT SOIL COVER OVER TOP OF STRUCTURE
- TOP OF BASE SLAB = 20' MAX BELOW GRADE
- STRUCTURE HEIGHT = 20' MAX

PEERLESS CONCRETE PRODUCTS CO.		246 Main Street Butler, NJ 07405 973.838.3060p	
SINCE 1959		sales@peerlessconcrete.com	
www.peerlessconcrete.com			
48" DIAMETER SANITARY MANHOLE			
CUSTOMER:			
PROJECT:			
SCALE: N.T.S.	DATE: 12/2023	EST#:	D-3