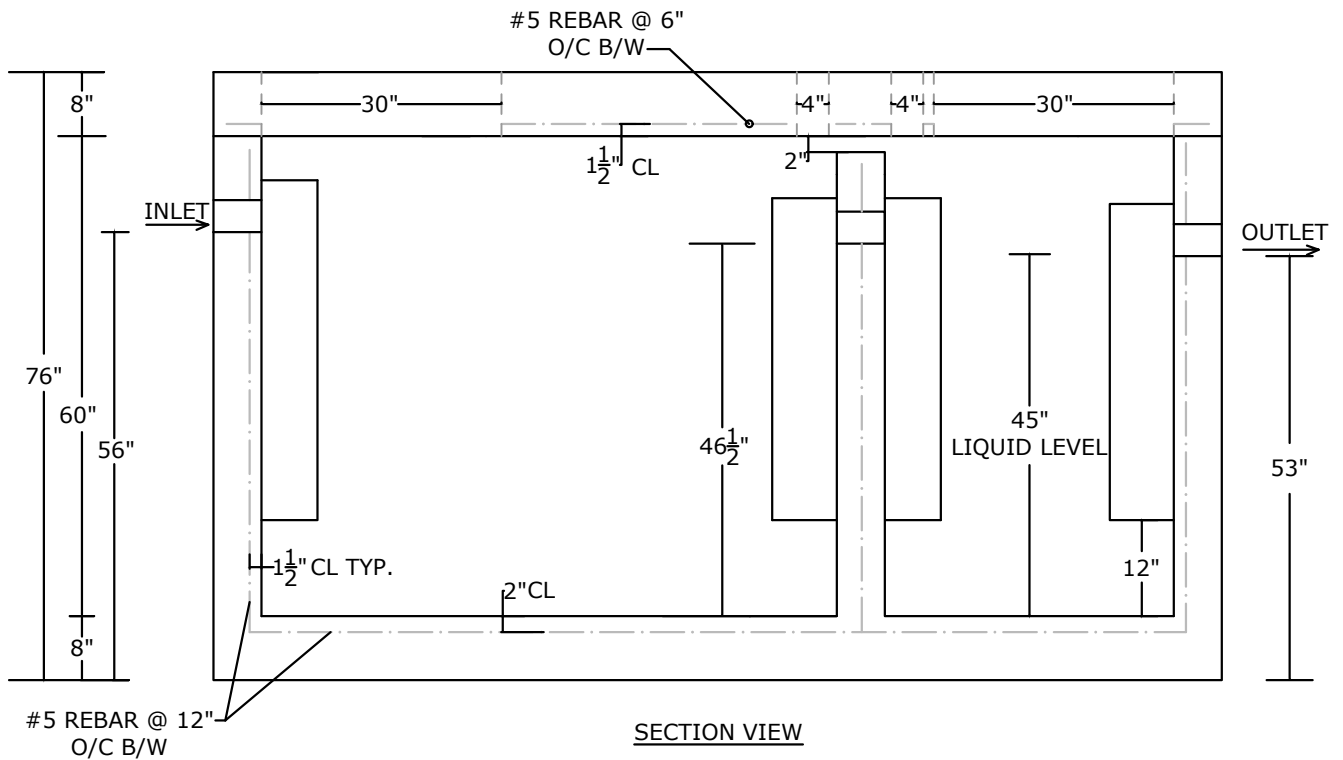


PLAN VIEW



SECTION VIEW

NOTES:

- LOAD RATING: HS-20
- CONCRETE 5,000 PSI @ 28 DAYS
- REINFORCING: AS SPECIFIED, GRADE 60 REBAR
- INTERIOR COATED 2 COATS OF APPROPRIATE SEALER
- PLASTIC BAFFLES
- WEIGHT OF TANK BASE: 22,000 LBS.+/-
- WEIGHT OF LID: 8,000 LBS.+/-

PEERLESS CONCRETE PRODUCTS CO. SINCE 1959		246 Main Street Butler, NJ 07405 973.838.3060p	
		sales@peerlessconcrete.com www.peerlessconcrete.com	
1500 GALLON HEAVY DUTY GREASE TRAP/ OIL SEPARATOR (2 COMPARTMENT)			
CUSTOMER:			
PROJECT:			
SCALE: N.T.S.	DATE: 12/2023	EST#:	G-5