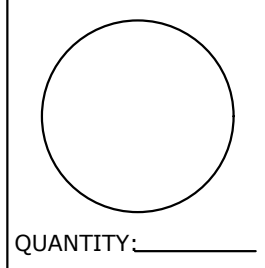
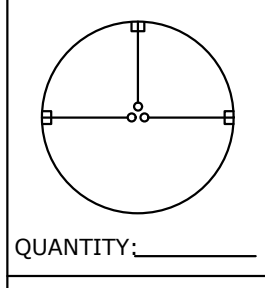
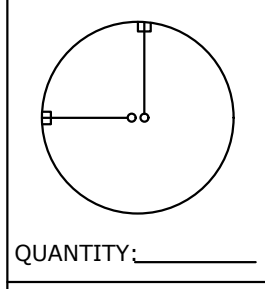
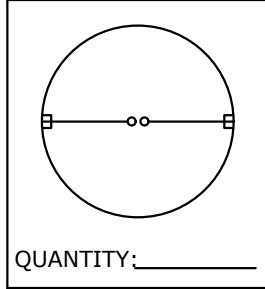
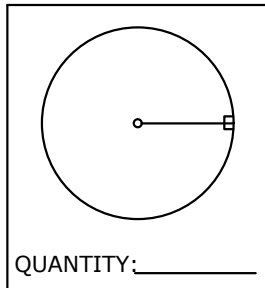
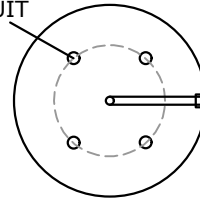


CONDUIT LAYOUT



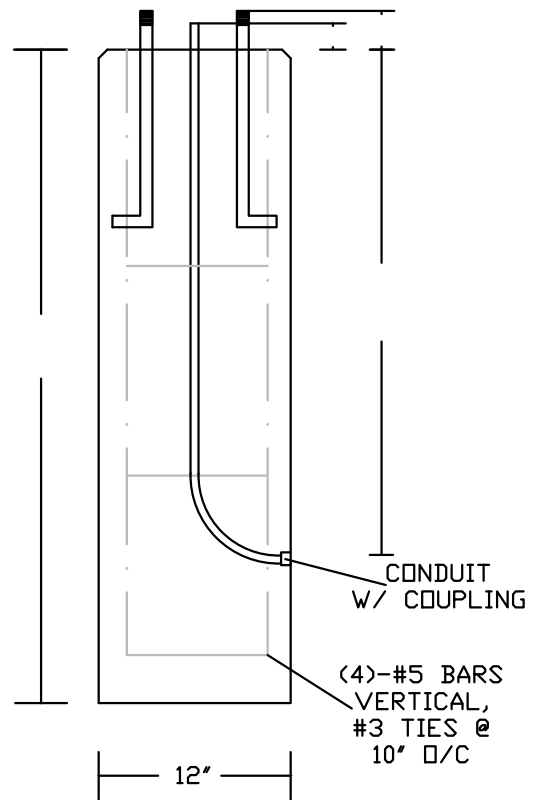
SIZE OF BOLTS AND
BOLT CIRCLE TO SUIT

BOLT PATTERN: _____
CONDUIT SIZE: _____
ABOVE GRADE: _____



12"

PLAN VIEW



SECTION VIEW

NOTES:

- CONCRETE 5,000 PSI @ 28 DAYS
- WEIGHT PER V.F. 12"- 122 LBS.
- ALL RAW/UNGLUED MATERIAL (CONDUIT, ELBOWS, COUPLINGS, AND ANCHOR BOLTS W/ 2 NUTS) TO BE PROVIDED BY CONTRACTOR BEFORE PRODUCTION
- WEIGHT: _____ LBS.
- TOTAL NUMBER OF BASES: _____

**PEERLESS CONCRETE
PRODUCTS CO.**

SINCE 1959

sales@peerlessconcrete.com

246 Main Street
Butler, NJ 07405
973.838.3060p

www.peerlessconcrete.com

12" DIA. LIGHT POLE BASE

CUSTOMER:

PROJECT:

SCALE: N.T.S.

DATE: 12/2023

EST#:

I-2