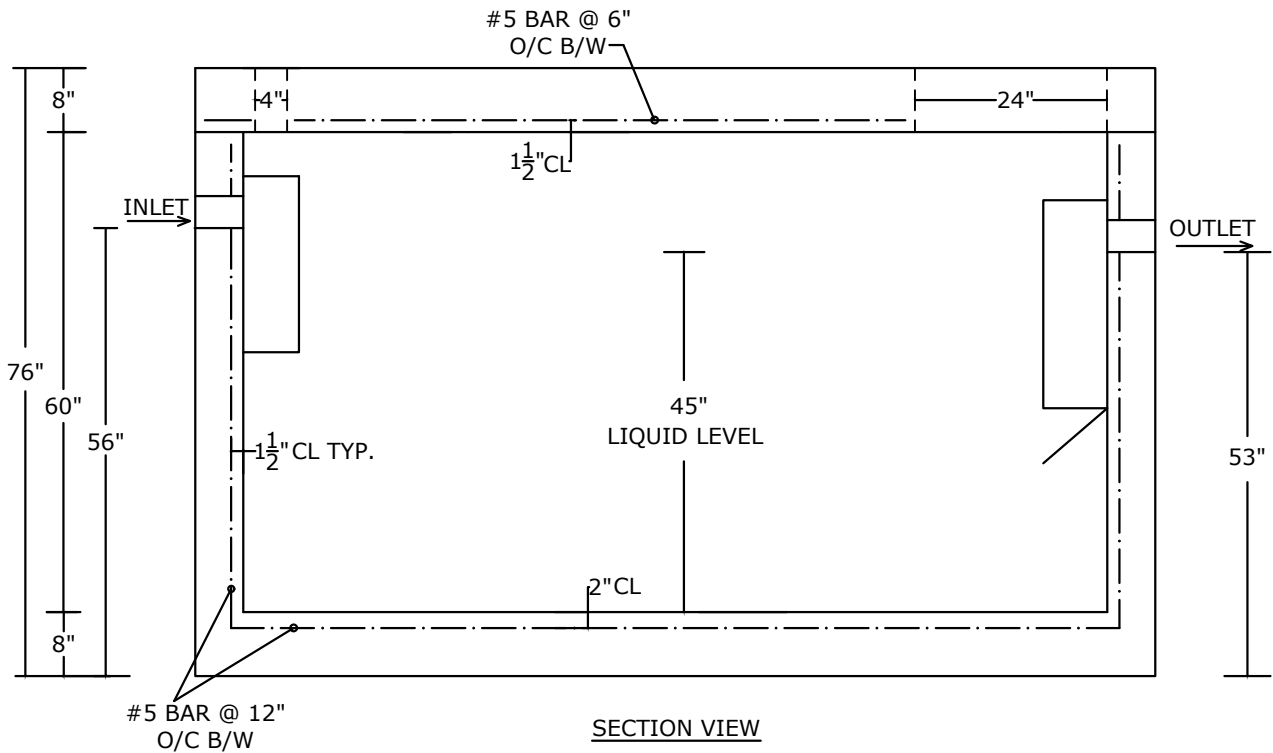


PLAN VIEW



SECTION VIEW

NOTES:

- LOAD RATING: HS-20
- CONCRETE 5,000 PSI @ 28 DAYS
- REINFORCING: AS SPECIFIED, GRADE 60 REBAR
- INTERIOR COATED 2 COATS OF APPROPRIATE SEALER
- PLASTIC BAFFLES, GAS DEFLECTOR- OUTLET
- OUTLET FILTER/SOLIDS RETAINER UPON REQUEST
- WEIGHT: 16,000 LBS.+/-
- WEIGHT OF LID: 5,000 LBS.+/-

PEERLESS CONCRETE PRODUCTS CO. SINCE 1959		246 Main Street Butler, NJ 07405 973.838.3060p	
		sales@peerlessconcrete.com	
1000 GALLON HEAVY DUTY RECTANGULAR SEPTIC TANK			
CUSTOMER:			
PROJECT:			
SCALE: N.T.S.	DATE: 1/2025	EST#:	A-26