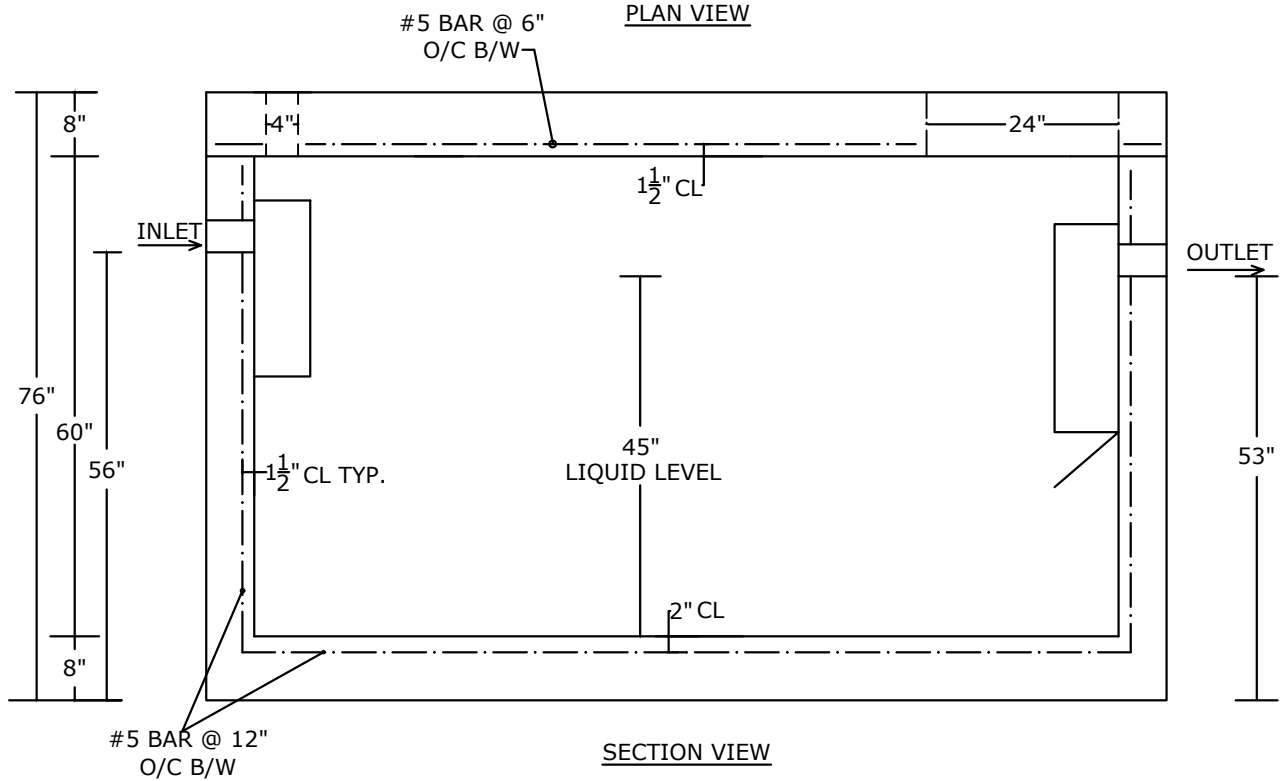


PLAN VIEW



SECTION VIEW

**NOTES:**

- LOAD RATING: HS-20
- CONCRETE 5,000 PSI @ 28 DAYS
- REINFORCING: AS SPECIFIED, GRADE 60 REBAR
- INTERIOR COATED 2 COATS OF APPROPRIATE SEALER
- PLASTIC BAFFLES, GAS DEFLECTOR- OUTLET
- OUTLET FILTER/SOLIDS RETAINER UPON REQUEST
- WEIGHT: 20,000 LBS.+/-
- WEIGHT OF LID: 8,000 LBS.+/-

<b>PEERLESS CONCRETE PRODUCTS CO.</b> SINCE 1959		246 Main Street Butler, NJ 07405 973.838.3060p	
		sales@peerlessconcrete.com    www.peerlessconcrete.com	
<b>1500 GALLON HEAVY DUTY RECTANGULAR SEPTIC TANK</b>			
CUSTOMER:			
PROJECT:			
SCALE: N.T.S.	DATE: 1/2025	EST#:	<b>A-29</b>