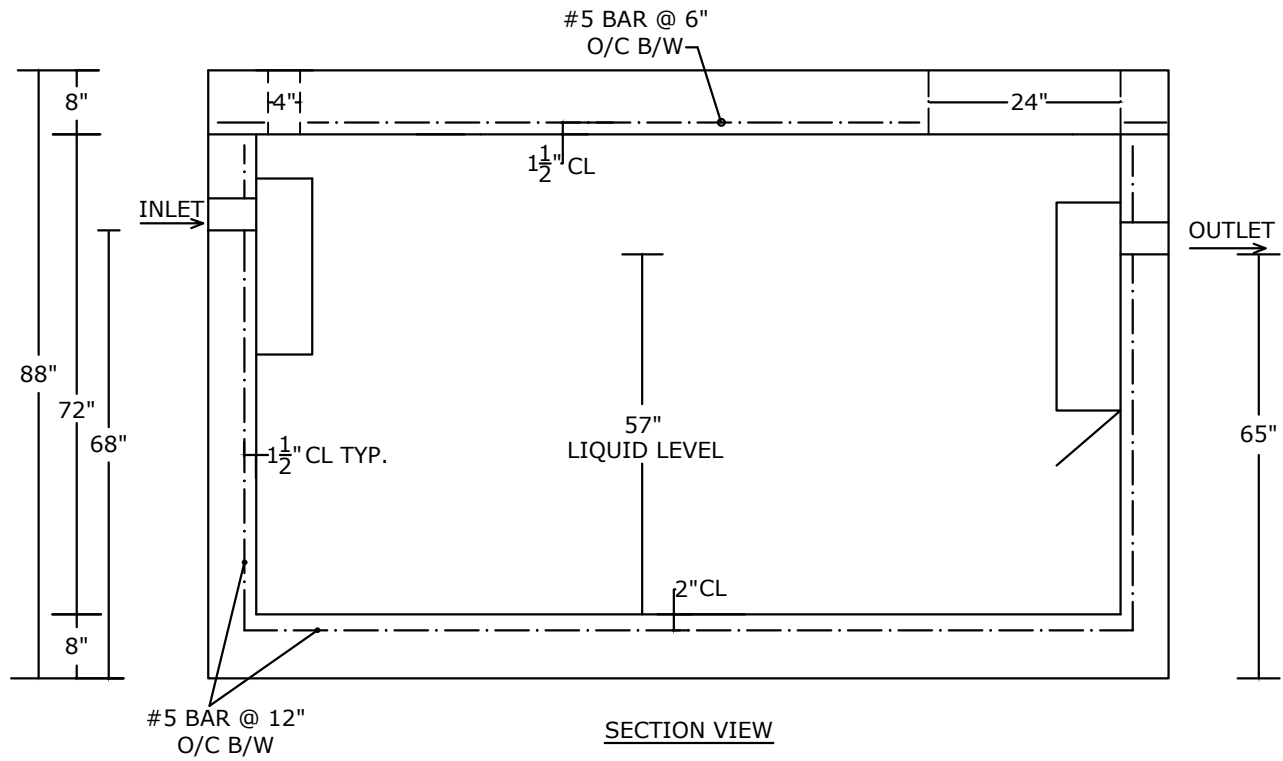


PLAN VIEW



SECTION VIEW

- NOTES:**
- LOAD RATING: HS-20
 - CONCRETE 5,000 PSI @ 28 DAYS
 - REINFORCING: AS SPECIFIED, GRADE 60 REBAR
 - INTERIOR COATED 2 COATS OF APPROPRIATE SEALER
 - PLASTIC BAFFLES, GAS DEFLECTOR- OUTLET
 - OUTLET FILTER/SOLIDS RETAINER UPON REQUEST
 - WEIGHT: 30,000 LBS.+/-
 - WEIGHT OF LID: 11,000 LBS.+/-

PEERLESS CONCRETE PRODUCTS CO. SINCE 1959		246 Main Street Butler, NJ 07405 973.838.3060p	
		sales@peerlessconcrete.com www.peerlessconcrete.com	
3000 GALLON HEAVY DUTY RECTANGULAR SEPTIC TANK			
CUSTOMER:			
PROJECT:			
SCALE: N.T.S.	DATE: 1/2025	EST#:	A-33