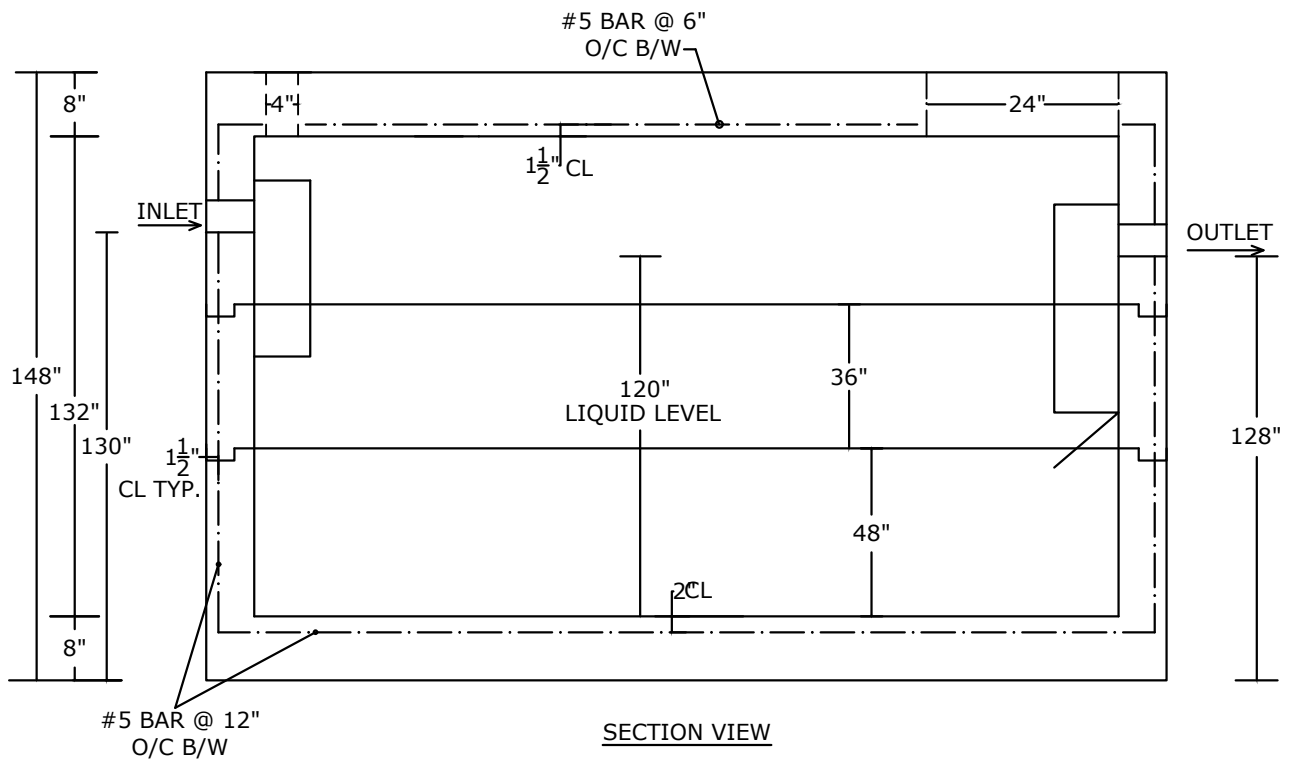


PLAN VIEW



SECTION VIEW

**NOTES:**

- LOAD RATING: HS-20 (8" BASE & TOP) \*SHOWN\*  
NON-TRAFFIC (6" BASE & TOP)
- CONCRETE 5,000 PSI @ 28 DAYS
- REINFORCING: AS SPECIFIED, GRADE 60 REBAR
- INTERIOR COATED 2 COATS OF APPROPRIATE SEALER
- PLASTIC BAFFLES, GAS DEFLECTOR-OUTLET
- OUTLET FILTER/SOLIDS RETAINER UPON REQUEST
- 6" SLIDE-IN BAFFLE WALL AVAILABLE UPON REQUEST
- MONO-BASE & MONO-TOP: 25,000 LBS.+/- EA.
- MID-RISER: 10,350 LBS.+/-

<b>PEERLESS CONCRETE PRODUCTS CO.</b> SINCE 1959		246 Main Street Butler, NJ 07405 973.838.3060p	
		sales@peerlessconcrete.com    www.peerlessconcrete.com	
<b>7000 GALLON HEAVY DUTY RECTANGULAR          SINGLE OR DUAL COMP. SEPTIC TANK</b>			
CUSTOMER:			
PROJECT:			
SCALE: N.T.S.	DATE: 1/2025	EST#:	<b>A-36</b>