

PLAN VIEW

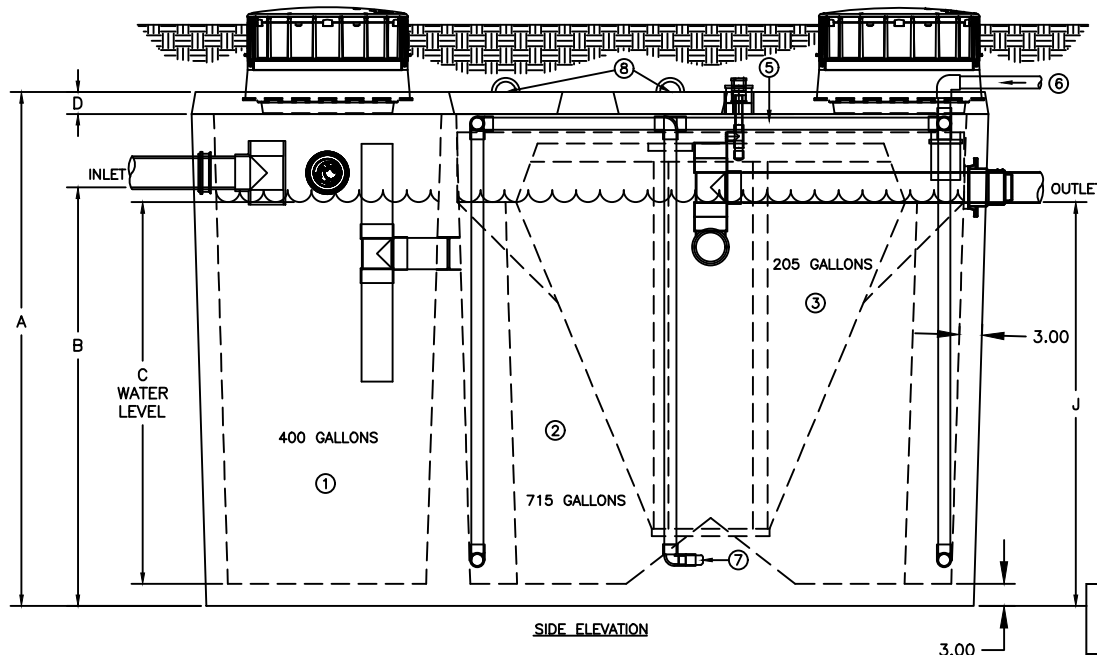
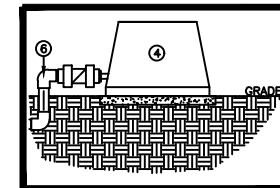
**CRITICAL DIMENSIONS**

	STD. TANK	H2O TANK
A	70.5"	75.5"
B	57.00"	59.00"
C	52.00"	52.00"
D	4"	7"
E	75.5"	75.5"
F	108.5"	108.5"
G	71.5"	71.5"
H	104.5"	104.5"
J	55"	57"

**THE H-SERIES HOOT AEROBIC TREATMENT SYSTEM**

- 1) PRETREATMENT TANK-- WHERE ANAEROBIC DIGESTION OCCURS AND STORAGE FOR NON-BIODEGRADABLE MATERIALS.
- 2) AERATION CHAMBER-- WHERE AIR IS INTRODUCED INTO SEWAGE FOR DIGESTION.
- 3) CLARIFIER-- A STILL CHAMBER WHERE SOLIDS SETTLE OUT AND THE CLEAR EFFLUENT RISES.
- 4) TROY AIR LINEAR AIR BLOWER-- LONG LIFE, EFFICIENT LINEAR BLOWER WHICH COMPRESSED ATMOSPHERIC AIR AND UNDER PRESSURE DELIVERS IT TO THE TANK. MAY BE REMOTELY MOUNTED UP TO 50' FROM SYSTEM. MUST MAINTAIN 1/8" SLOPE TOWARDS TANK FOR DRAINAGE.
- 5) AIR MANIFOLD-- DELIVERS THE AIR FROM THE LINE TO THE STONES FOR DIFFUSION INTO THE SEWAGE.
- 6) AERATION LINE-- DELIVERS THE AIR FROM THE PUMP TO THE MANIFOLD. CHECK VALVE INCLUDED.
- 7) AERATION STONE-- AIR IS FINELY DIFFUSED FROM THE STONE INTO THE AERATION CHAMBER.
- 8) 15" COVERS-- PROVIDE ASSEMBLY PORT ACCESS INSIDE OF THE SYSTEM. (NOT REQUIRED FOR REGULAR SERVICE)

**TROY AIR BLOWER**



SIDE ELEVATION

A-48

**PEERLESS CONCRETE PRODUCTS CO.**

SINCE 1959

sales@peerlessconcrete.com

246 Main Street  
Butler, NJ 07405  
973.838.3060p

20 Park Drive  
Franklin, NJ 07416  
973.827.7563p

www.peerlessconcrete.com



**HOOT SYSTEMS, LLC**  
www.hootsystems.com

THIS DRAWING IS THE PROPRIETARY PROPERTY OF HOOT SYSTEMS LLC. REPRODUCTION, DISCLOSURE OR USE OF ANY PART OF THIS DRAWING OR ANY INFORMATION THEREIN IS EXPRESSLY PROHIBITED WITHOUT PRIOR WRITTEN CONSENT OF HOOT SYSTEMS LLC.

**DESCRIPTION:**  
600 GPD GRAVITY DISCHARGE SYSTEM  
HOOT SYSTEMS H-600A

**PART #**

H-600A

**DATE:**  
12-2-2016

**DRAWN BY:**  
AY

**CHECK BY:**  
RS

**SCALE:**  
N.T.S.