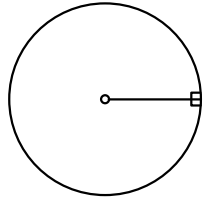
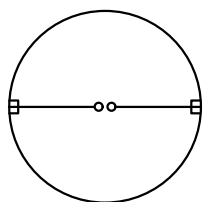
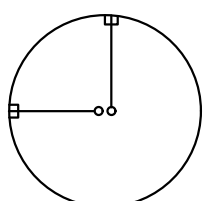
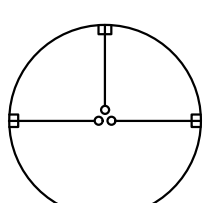
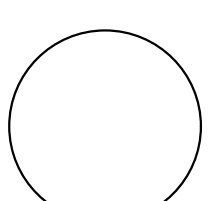
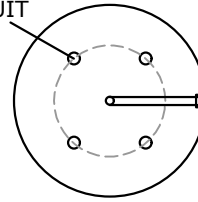


CONDUIT LAYOUT


QUANTITY: _____

QUANTITY: _____

QUANTITY: _____

QUANTITY: _____

QUANTITY: _____

SIZE OF BOLTS AND  
BOLT CIRCLE TO SUIT

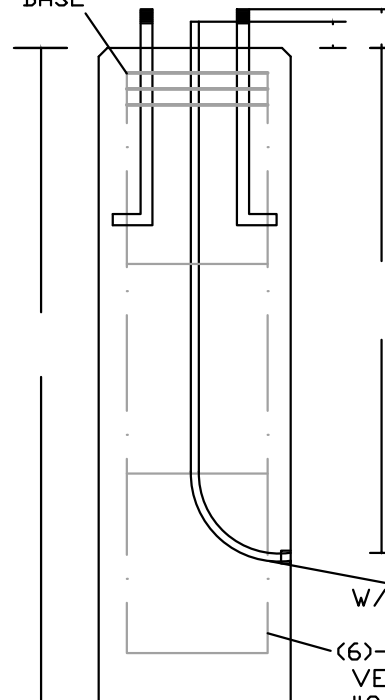
BOLT PATTERN: \_\_\_\_\_  
CONDUIT SIZE: \_\_\_\_\_  
ABOVE GRADE: \_\_\_\_\_



18"

PLAN VIEW

(3)-#3 TIES  
@ TOP 5'  
OF BASE



18"

SECTION VIEW

NOTES:

- CONCRETE 5,000 PSI @ 28 DAYS
- WEIGHT PER V.F. 18"- 275 LBS.
- ALL RAW/UNGLUED MATERIAL (CONDUIT, ELBOWS, COUPLINGS, AND ANCHOR BOLTS W/ 2 NUTS) TO BE PROVIDED BY CONTRACTOR BEFORE PRODUCTION
- WEIGHT: \_\_\_\_\_ LBS.
- TOTAL NUMBER OF BASES: \_\_\_\_\_

**PEERLESS CONCRETE PRODUCTS CO.**

SINCE 1959

sales@peerlessconcrete.com

246 Main Street  
Butler, NJ 07405  
973.838.3060p

www.peerlessconcrete.com

**18" DIA. LIGHT POLE BASE**

CUSTOMER:

PROJECT:

SCALE: N.T.S.

DATE: 2/2026

EST#:

**I-3**