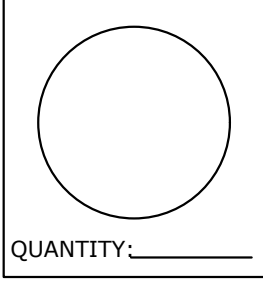
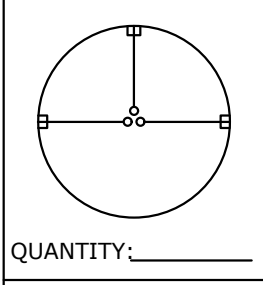
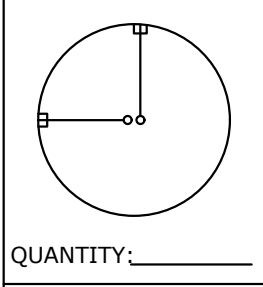
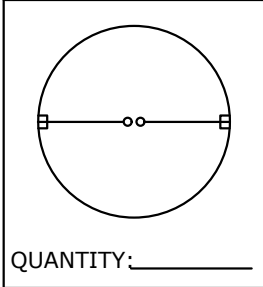
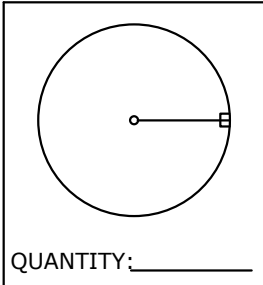
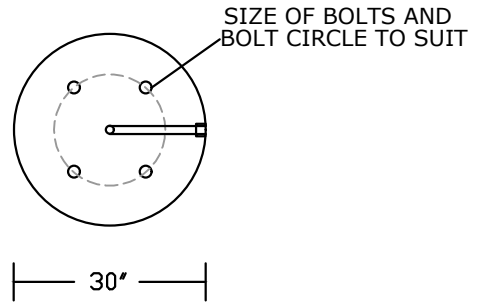


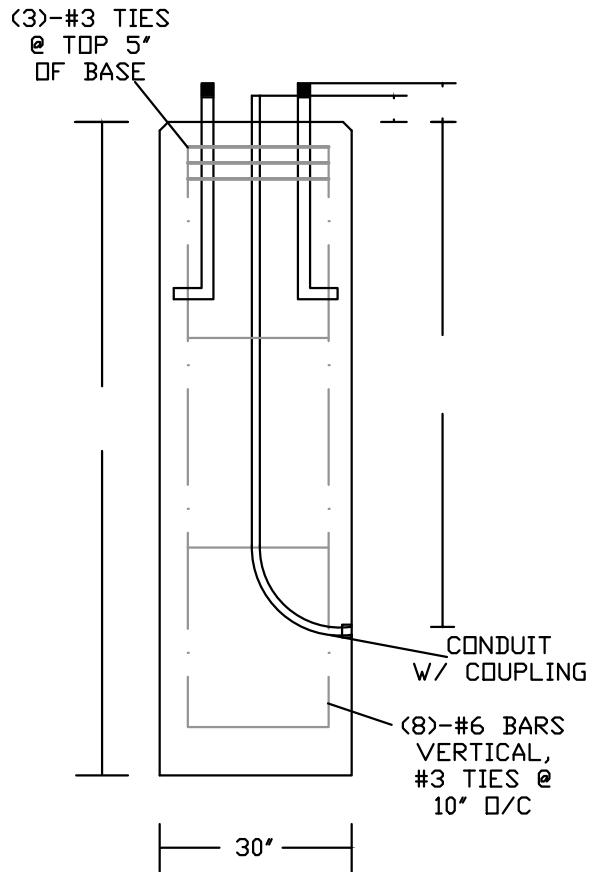
CONDUIT LAYOUT



BOLT PATTERN: _____
 CONDUIT SIZE: _____
 ABOVE GRADE: _____



PLAN VIEW



SECTION VIEW

NOTES:

- CONCRETE 5,000 PSI @ 28 DAYS
- WEIGHT PER V.F. 30"- 735 LBS.
- ALL RAW/UNGLUED MATERIAL (CONDUIT, ELBOWS, COUPLINGS, AND ANCHOR BOLTS W/ 2 NUTS) TO BE PROVIDED BY CONTRACTOR BEFORE PRODUCTION
- WEIGHT: _____ LBS.
- TOTAL NUMBER OF BASES: _____

PEERLESS CONCRETE PRODUCTS CO.		246 Main Street Butler, NJ 07405 973.838.3060p	
<i>SINCE 1959</i>		www.peerlessconcrete.com	
sales@peerlessconcrete.com		www.peerlessconcrete.com	
30" DIA. LIGHT POLE BASE			
CUSTOMER:			
PROJECT:			
SCALE: N.T.S.	DATE: 2/2026	EST#:	I-5